

# MONTHLY MEMBERSHIP PROGRESS REPORT

District 13 OH3

Results as of: 9/30/2019

GMT:

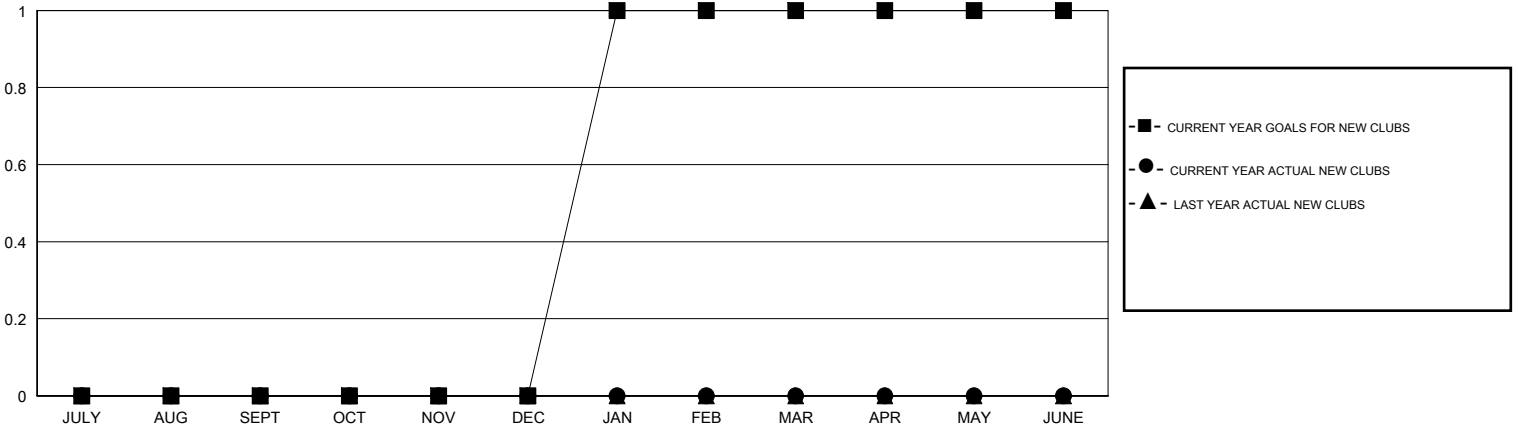
LOCATION OHIO

GMT CA

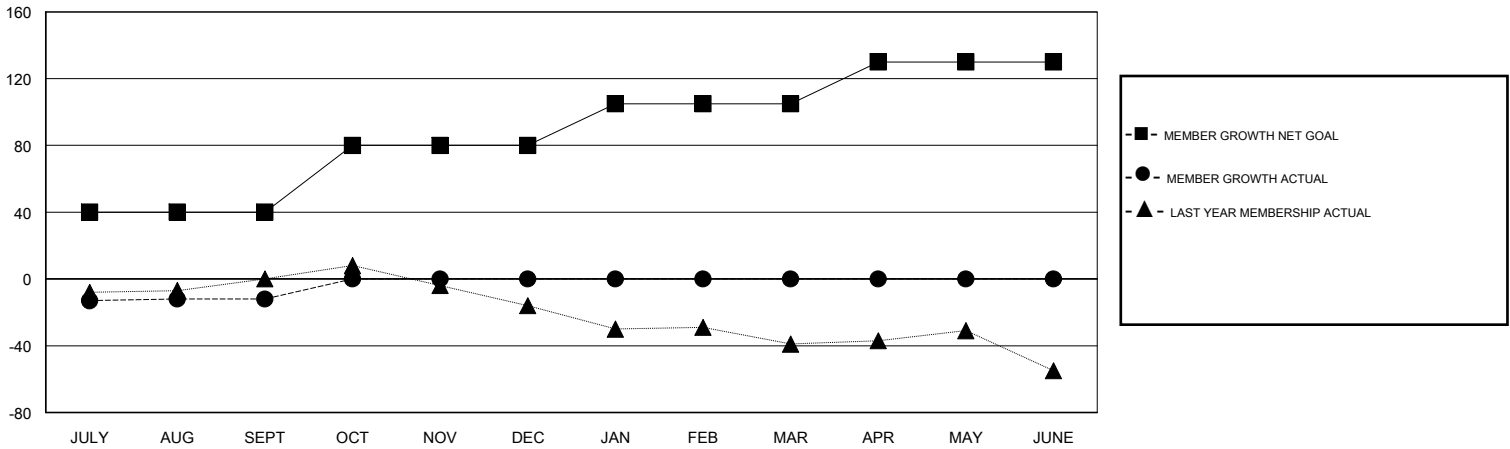
Clubs			
RESULTS FOR 2019-2020			
QUARTER	NEW CLUB GOAL	NEW CLUBS	DROPPED CLUBS
JULY/AUG/SEPT	0	0	0
OCT/NOV/DEC	0	0	0
JAN/FEB/MAR	1	0	0
APR/MAY/JUNE	0	0	0

Members			
RESULTS FOR 2019-2020			
QUARTER	MEMBER GROWTH NET GOAL	MEMBER GROWTH ACTUAL	DROPPED MEMBERS ACTUAL (including transfers)
JULY/AUG/SEPT	40	34	44
OCT/NOV/DEC	40	0	0
JAN/FEB/MAR	25	0	0
APR/MAY/JUNE	25	0	0

GOALS AND ACTUAL NEW CLUBS CUMULATIVE



GOALS AND ACTUAL MEMBERS CUMULATIVE



DROPPED CLUBS: 0	15 CLUBS OF 56 ADDED 1 OR MORE NEW MEMBERS	<u>GENDER DISTRIBUTION</u> MALE 1,005 (68.46%) FEMALE 463 (31.54%)
<u>DROPPED MEMBERS</u> DECEASED 6 CLUB CANCELLED 0 OTHER 38 <hr/> TOTAL 44	<a href="#">CLICK HERE FOR CUMULATIVE MEMBERSHIP DATA</a>	TOTAL FAMILY UNIT MEMBERS 269 FAMILY MEMBERS PAYING HALF DUES 140